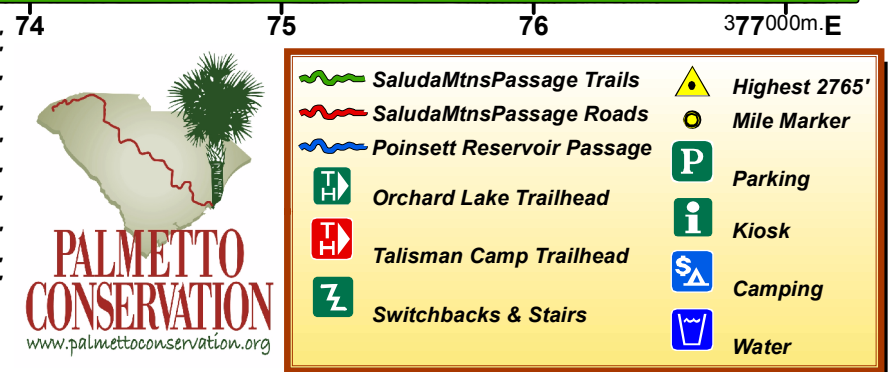
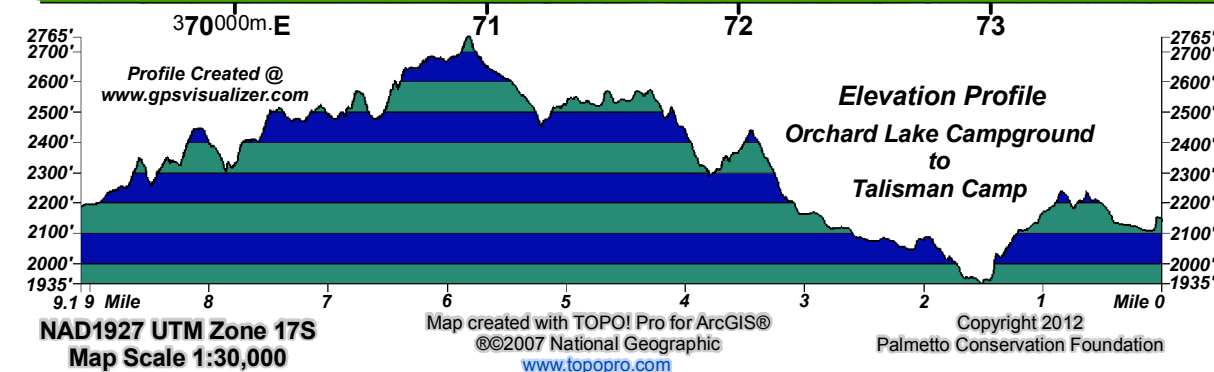
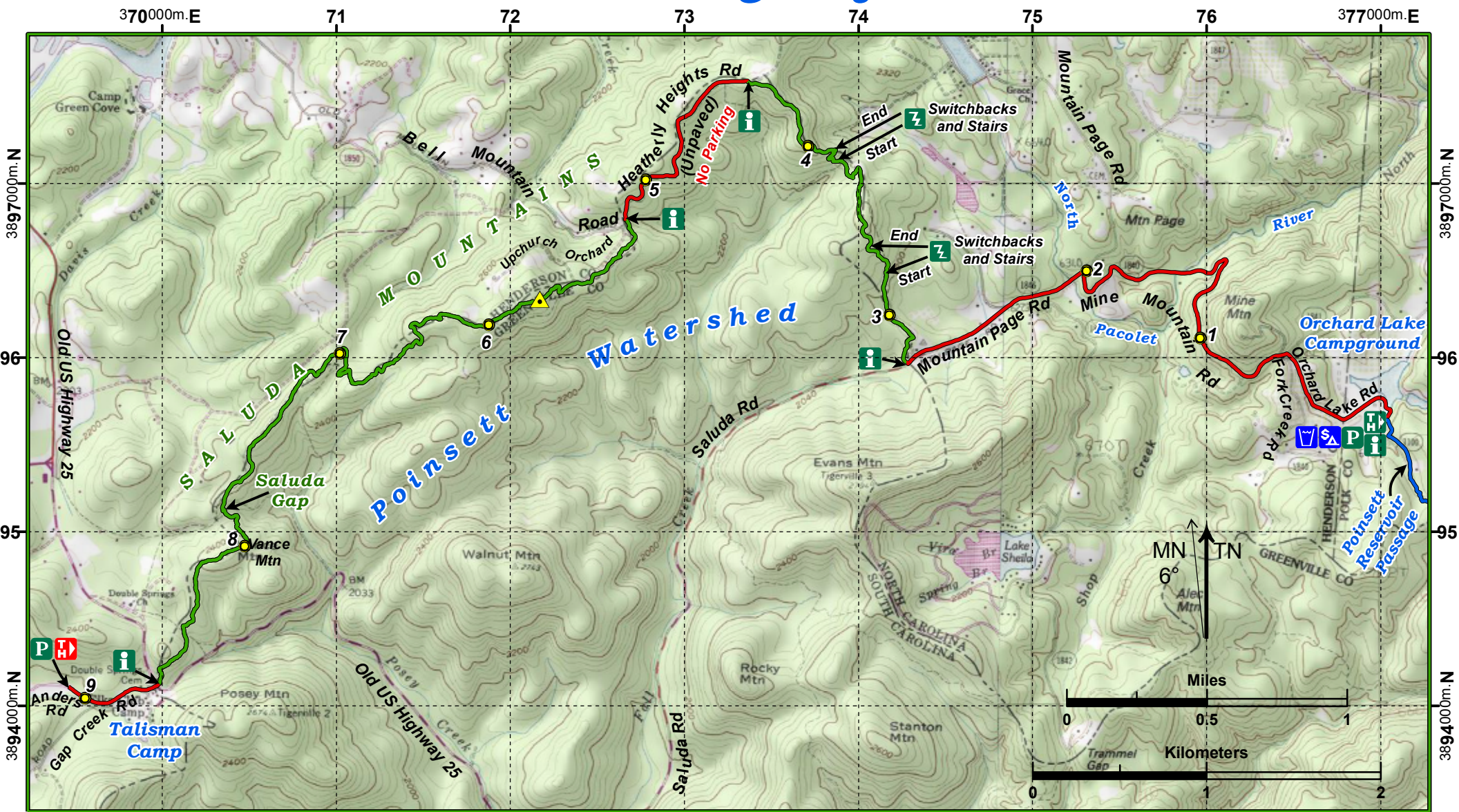


# Saluda Mountains Passage of the Palmetto Trail





# Saluda Mountains Passage of the Palmetto Trail

## Trail Information

Length: 9.1 Miles

Use: *Hiking Only!*

Difficulty: Moderate to Strenuous

### Passage Restrictions:

No vehicles

No Camping or Fires

Park ONLY in designated areas

No Parking on Heatherly Heights Rd

Trail Marking: Trail Signs and Yellow Blazes

## Rules and Precautions

- Please practice "Leave No Trace" philosophy, pack out what you pack in
- **Stay on designated trails**
- Walk on the left side of road facing oncoming traffic
- Leave what you find
- Respect private property
- Be considerate of fellow trail users
- No fire or camping on the trail. Use the Orchard Lake Campground, when open
- **Vehicles are prohibited!**
- Pack plenty of food and water, there is no water on the trail
- **Check the Greenville Water System "Rules for Palmetto Trail" posted at all trail kiosks. These trail rules are online at the Palmetto Conservation web site.**

## Additional Information

### Palmetto Conservation Foundation

722 King Street  
Columbia, SC 29205  
(803) 771-0870

[www.palmettoconservation.org](http://www.palmettoconservation.org)

### Orchard Lake Campground

460 Orchard Lake Rd.  
Saluda, NC 28773  
(828)749-3901

[www.orchardlakecampground.com](http://www.orchardlakecampground.com)

Open April through October

## Driving directions:

### To Orchard Lake Campground

#### From Greenville:

Take US 25 North past Hwy 11  
Turn right on Old US 25 for 7.1 miles  
Turn right on Saluda Rd for 3.1 miles, the road become Mountain Page Rd @ the NC line  
Turn right on Mine Mountain Rd for 1.3 miles to the junction of Orchard Lake, Fork Creek & W Fork Creek Roads  
Curve right on Fork Creek Rd for .75 mile  
Turn left into the Orchard Lake parking area  
See below [Trailhead Parking & Kiosk](#)

#### From Columbia:

Take I-26 West into NC  
Take exit 67 to Tryon for 3.4 miles  
Turn right on US 176 towards Saluda for 4.7 miles, you will see a brown Pearson's Falls sign  
Turn Left on Pearson's Falls Rd for .5 mile, cross Pacolet River & go under railroad trestle  
Turn left on Fork Creek Rd, immediately after crossing under the railroad and go 4 miles  
Turn right into the Orchard Lake parking area  
[Trailhead Parking & Kiosk](#)

The parking area is inside a split rail fence just off of Fork Creek Road. At the other end of the open RV camping area is the trailhead kiosk.

### To Talisman Camp

#### From Greenville:

Take US 25 North into NC  
Take exit 1 off US 25 for .2 miles  
Turn right on Bobs Creek Rd for .9 mile  
[from Bobs Creek Rd](#)  
Turn right at the dead end on Old US 25 South for .95 miles to the SC line  
Turn right on Gap Creek Rd for .2 mile, Gap Creek Rd turns left here  
Continue straight on Anders Rd for .1 mile  
Turn left into the Talisman Camp parking area

#### From Columbia:

Take I-26 West into NC  
Take exit 54 onto US 25 South (Greenville Hwy) for 7.9 Miles  
Take exit 1 off US 25 for .2 miles  
Turn left on Bobs Creek Rd for 1 mile  
Follow above [from Bobs Creek Rd](#) directions

### From Orchard Lake Campground to Talisman Camp

From the Orchard Lake parking area  
Turn right on Fork Creek Rd for .75 mile to the junction of Orchard Lake, Mine Mountain & W Fork Creek Roads  
Curve left onto Mine Mountain Rd for 1.4 miles  
Turn left onto Mountain Page Rd for 3.1 miles, the road becomes Saluda Rd @ the SC line  
Turn right onto Old US 25 for 2.2 miles  
Turn left on Gap Creek Rd for .2 mile, Gap Creek Rd turns left here  
Continue straight on Anders Rd for .1 mile  
Turn left into the Talisman Camp parking area

## Off Road Trailhead Locations:

Mile 2.8 - Mountain Page Rd/Saluda Rd at the NC/SC State line  
Mile 8.7 - Old US Highway 25 & Gap Creek Rd at the NC/SC State line



GreenvilleWater



THE GRAHAM  
FOUNDATION



The Nature  
Conservancy   
Protecting nature. Preserving life.™

THE DANIEL-MICKEL FOUNDATION